

Technical Information Package

McKay Auditorium

Fitchburg State College
Fitchburg, MA 01420

CARPENTRY:

STAGE DEMINSIONS:

Proscenium:	
Height:	16' 7"
Width:	37'
Depth:	
Curtain Line to US Post:	13' 4"
Curtain Line to US Wall:	18' 6"
Stage Lip to Curtain Line:	6' 2"
Stage Lip to US Post:	19' 6"
Height:	
Floor to Curtain:	
Floor to ceiling:	25' 6"
Width:	
CL to SR Wall:	31' 3"
CL to SL Wall:	31' 3"
Wing Space:	19' x 12' 9"
Breezeway:	
Depth:	6'
Height:	9'

HOUSE DRAPPERY:

House Curtain - Blue - Split traveler operated stage right.
Travelers - Black SL/SR 21' 3" of CL
Back Curtain - Black - Split traveler operated stage right
Cyclorama - White with black scrim in front of it.
Teaser - Black 14' x 30'
Grand Valance - 13' 10"

LOAD IN DATA:

Theater is on second story of building. Scenery must fit through an outside door of 35" x 83". Then the set must be carried up a flight of stairs with a landing. Objects can not be longer than 14' and must be smaller than 5' wide. Stage doors are on each side of the stage. There is also access to an elevator but objects must fit in a 4' x 7' door. Access to the elevator is limited.

DRESSING ROOMS: There is a male and female Dressing room located just down the hall from back stage right. Each dressing room is equipped with dressing stations, toilets, showers, and lockers.

LIGHTING:

DIMMERS: 48 2.4K Dimmers
1- 24 Rack dimmers 100 amps
2- 12 Rack dimmers 70 amps
All are ETC Censor Touring, Standard Control Model, DMX and AMX Compatible

Front of House: 7 Circuits
First Electric: 12 Circuits
Second Electric: 8 Circuits
House Boom SL 1: 3 Circuits
House Boom SL 2: 3 Circuits
House Boom SR 1: 3 Circuits
House Boom SR 2: 3 Circuits
Proscenium SL: 3 Circuits
Proscenium SR: 3 Circuits

Positions: All Dimensions are of the Proscenium and Stage height.

Front of House:	Depth: 20'	Height: 22'
First Electric:	Depth: 2'	Height: 14'
Second Electric:	Depth: 8' 9"	Height: 14'
House Boom SL 1:	Depth: 13' 3"	Height: B-8' 6" T-18' 6"
House Boom SL 2:	Depth: 32'	Height: B-8' 6" T-18' 6"
House Boom SR 1:	Depth: 13' 3"	Height: B-8' 6" T-18' 6"
House Boom SR 2:	Depth: 32'	Height: B-8' 6" T-18' 6"
Proscenium SL:	Depth: 2'	Height: 15' 6"
Proscenium SR:	Depth: 2'	Height: 15' 6"

CONTROLS: ETC Express 24/48 model

HOUSE LIGHTING: 4 Scoops controlled by the board used during shows, and regular ceiling lights for

regular operations other than shows
controlled by an on/off switch.

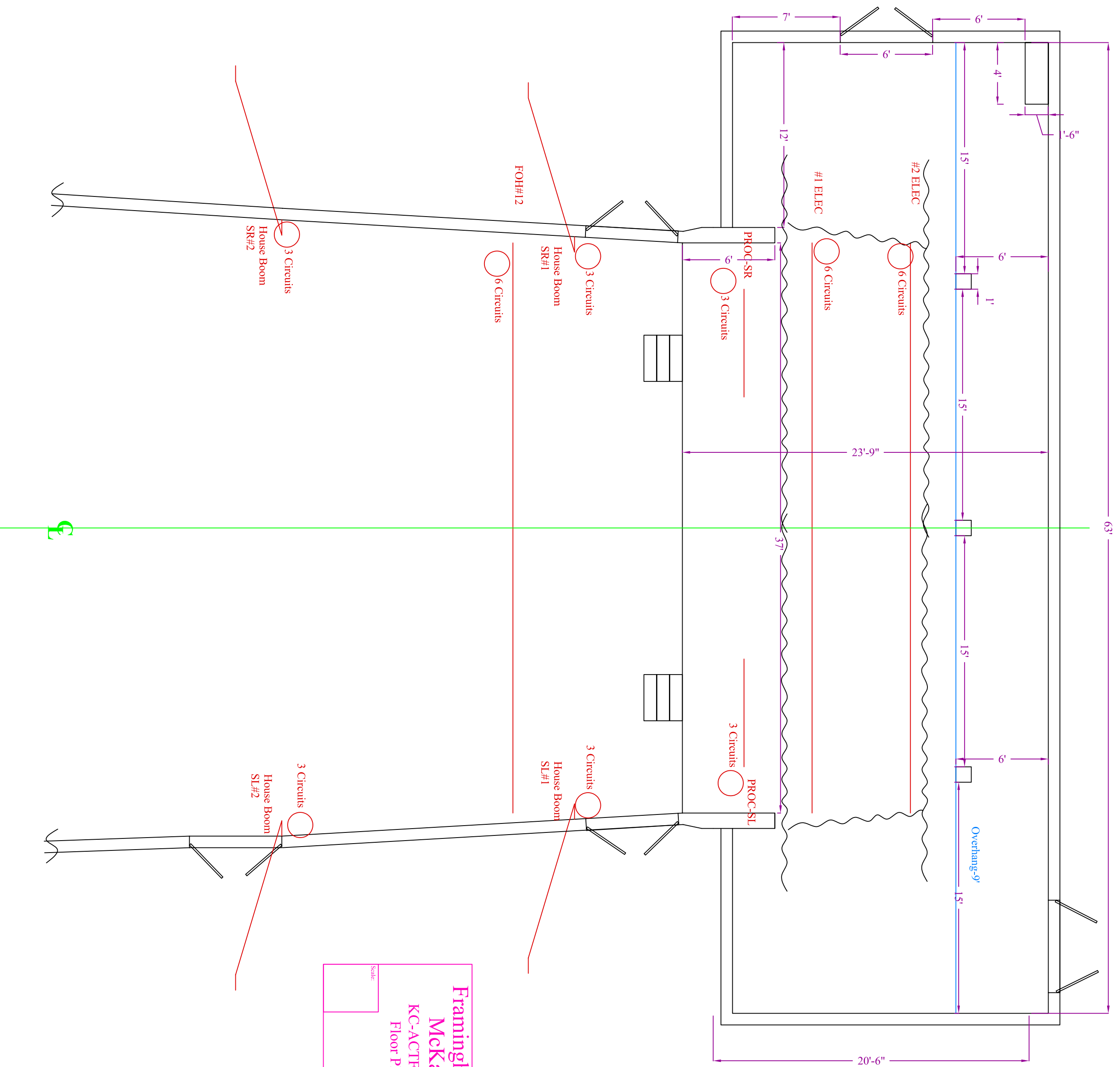
INSTRUMENTS:

Front of House:	6 - Source 4 26*
	1 - Source 4 36*
First Electric:	8 - Source 4 26*
	4 - Source 4 Pars
Second Electric:	2 - Source 4 19*
	10 - Source 4 Pars
Proscenium l:	3 - Source 4 Pars
Proscenium R:	3 - Source 4 Pars
House Booms SR/SL 1:	2 - Source 4 26*
	1 - Source 4 19*
House Booms SR/SL 2:	2 - Source 4 36*
	1 - Source 4 26*

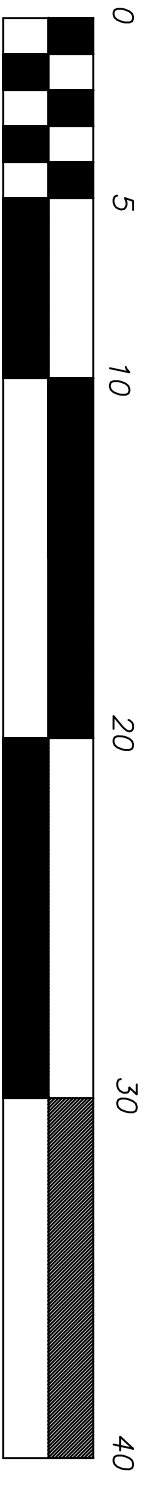
SOUND:

HOUSE SOUND SYSTEM:

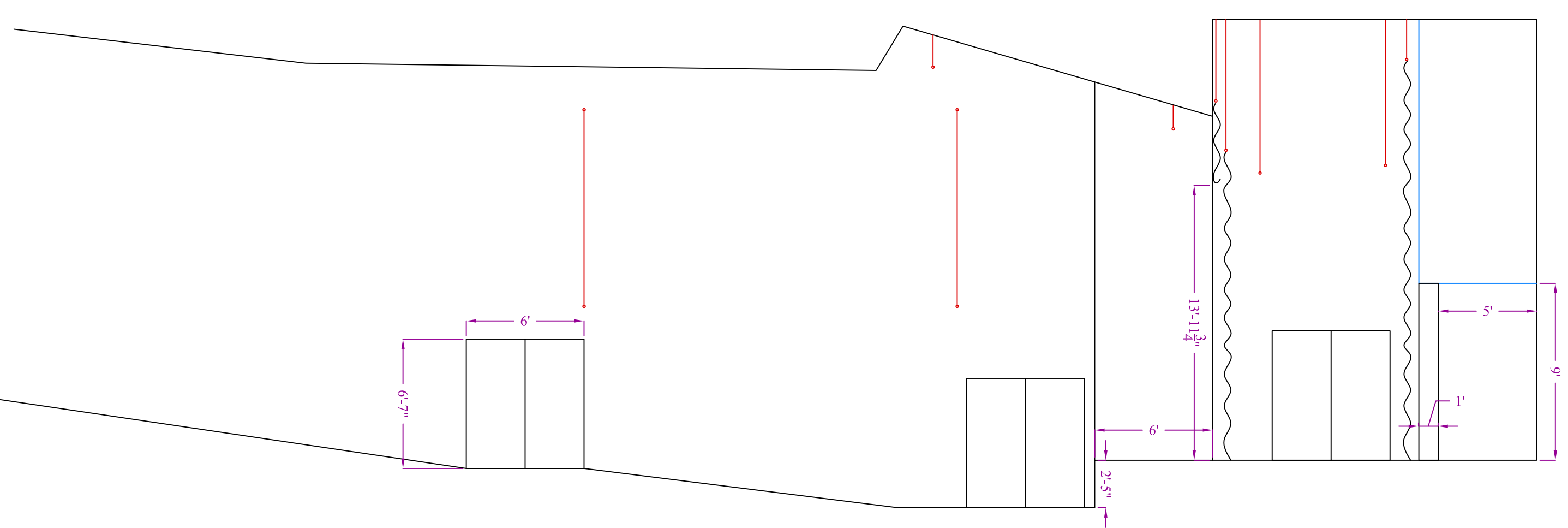
Speakers:	4 - JBL Eon Series 15" Speakers @ 8 ohm.
	2 - Located in each Dressing rooms
	2 - House sound system set up stereo HL/HR
Amplifiers:	Crown 2 channel 1000 watt
Board:	Mackie 1600 plz 12 channel

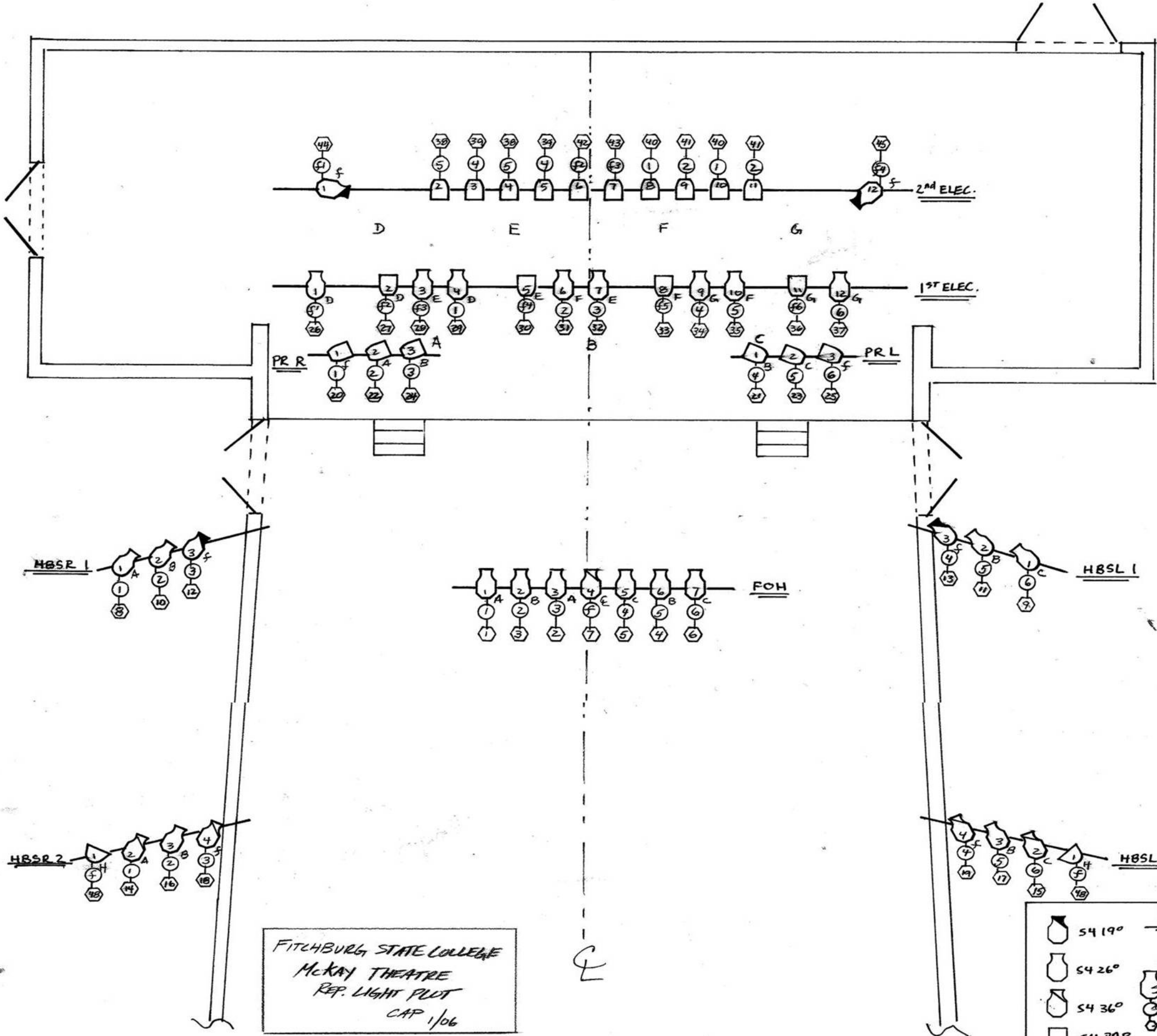


Framingham State College
 McKay Auditorium
 KC-ACTF Region I Festival 2006
 Floor Plan / Vertical Section
 Draft: WhitneyJ., White



SCALE IN FEET





FITCHBURG STATE COLLEGE
 MCKAY THEATRE
 REP. LIGHT PLOT
 CAP 1/06

KEY	
	54 190
	54 260
	54 360
	54 PAR
	10" SCOOP
	COLOR
	INST. #
	AREA
	CIR.
	CH/DIM